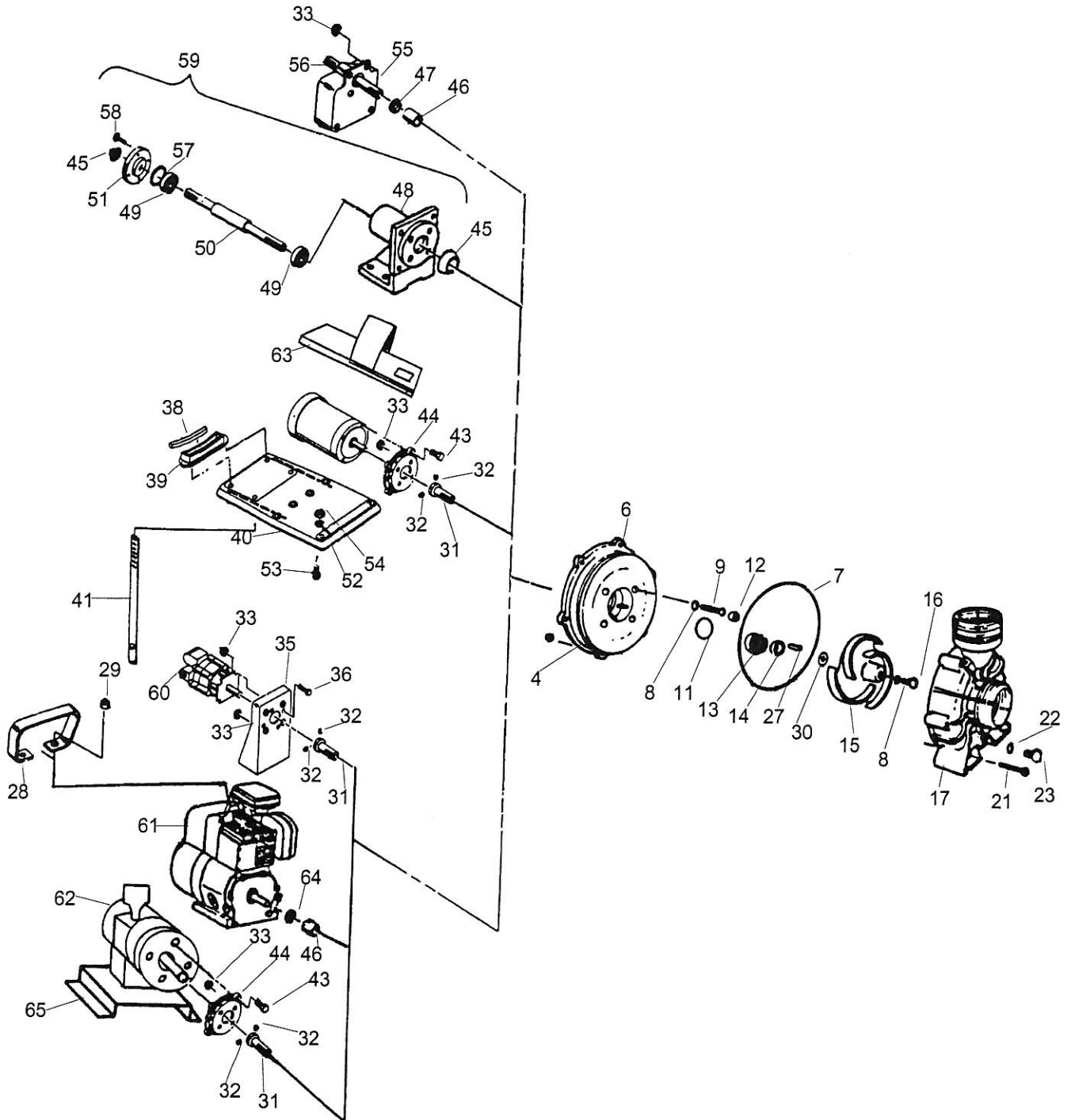
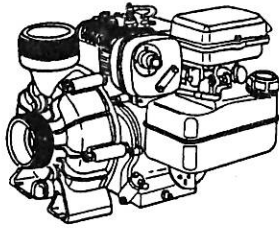


# End Suction Centrifugal Pump SERIES "PC" (NON-SELF PRIMING) EXPLODED VIEW PARTS DIAGRAM

PARTS LIST  
PP-9960F  
AUG 2000



# "PC" PUMP PARTS LIST

PARTS LIST  
PP-9960F  
AUG 2000

ITEM #	PART #	PART DESCRIPTION	QTY./PUMP	ITEM #	PART #	PART DESCRIPTION	QTY./PUMP
4	58-0721	NUT, BODY, Plated Steel, 1/4"-20 Hex	6	58-1386	10	SCREW, Volute, Stainless Steel, 1/4"-20 x 2.75" long, for 3" pump	6
	58-0721 10	NUT, BODY, Stainless Steel, 1/4"-20 Hex	6	22	58-1009 71	O-RING, Drain Plug, Buna-N	1
	58-0721 10F	FLANGE NUT, BODY, Stainless Steel, 1/4"-20, for Polypropylene pumps only	6		58-1009 72	O-RING, Drain Plug, EPDM	1
6	58-1016 20	BRACKET, Noryl, gray	1		58-1009 73	O-RING, Drain Plug, Viton	1
	58-1016 30	BRACKET, Polyester, black	1	23	58-0723 20	PLUG, Drain, Noryl, gray	1
	58-1016 40	BRACKET, Polypropylene, gray	1		58-0723 30	PLUG, Drain, Polyester, black	1
	58-1016 60	BRACKET, Ryton, black	1		58-0723 40	PLUG, Drain, Polypropylene, gray	1
7	58-1316 71	O-RING, Volute, Buna-N	1		58-0723 60	PLUG, Drain, Ryton, brown	1
	58-1316 72	O-RING, Volute, EPDM	1	27	58-0718	KEY, Steel	1
	58-1316 73	O-RING, Volute, Viton	1		58-0718 10	KEY, Stainless Steel	1
8	58-0717 71	O-RING, SCREW, Buna-N	5		58-0718 30	KEY, Molded Polyester	1
	58-0717 72	O-RING, SCREW, EPDM	5		58-0718 93	KEY, Titanium	1
	58-0717 73	O-RING, SCREW, Viton	5	28	58-1238	HANDLE, Plated Steel, 3.5HP Eng. Driven Pumps only	1
9	58-0715 10	SCREW, BRACKET, Stainless Steel for Pumps Close Coupled to Engine, Cast Iron ped. 5/16"-24 x 1.25" long	4	29	58-0745	KEPNUT, 5/16"-18, Plated Steel	2
	58-0715 91	SCREW, BRACKET, Hastelloy C for Pumps Close Coupled to Engine, Cast Iron ped. 5/16"-24 x 1.25" long	4	30	58-0778 11	SHIM, .006"	as required
	58-0715 93	SCREW, BRACKET, Titanium for Pumps Close Coupled to Engine, Cast Iron ped. 5/16"-24 x 1.25" long	4		58-0778 12	SHIM, .015"	as required
	58-0728 10	SCREW, BRACKET, Stainless Steel for Pumps Plastic Pedestal Mounted, Close Coupled to Electric, Hydraulic or Pneumatic Motor, 5/16"-18 x 1.5" long	4		58-0778 13	SHIM, .030"	as required
	58-0728 91	SCREW, BRACKET, Hastelloy C for Pumps Plastic Pedestal Mounted, Close Coupled to Electric, Hydraulic or Pneumatic Motor, 5/16"-18 x 1.5" long	4	31	58-1014 10	ADAPTER, Shaft, for Close Coupled Electric or Pneumatic Motor, Stainless Steel, .625" bore	1
	58-0728 93	SCREW, BRACKET, Titanium for Pumps Plastic Pedestal Mounted, Close Coupled to Electric, Hydraulic or Pneumatic Motor, 5/16"-18 x 1.5" long	4		58-1014 93	ADAPTER, Shaft, Titanium, for Close Coupled Electric or Pneumatic Motor, .625" bore	1
11	58-0976 71	O-RING, SHAFT SEAL, Buna-N	1		58-1165 10	ADAPTER, Shaft, Stainless Steel, for Hydraulic Motor, .563" bore	1
	58-0976 72	O-RING, SHAFT SEAL, EPDM	1	32	58-0883	SET SCREW, 1/4"-20 X .25" Long, Steel	2
	58-0976 73	O-RING, SHAFT SEAL, Viton	1	33	58-0745	KEPNUT, 5/16"-18, Plated Steel	4
2	58-0750 40	PLUG, Bracket Screw Protector, Polypropylene (Viton pumps only)	4	35	58-1011 20	PEDESTAL, Hydraulic Motor, Molded Plastic	1
	58-0750 90	PLUG, Bracket Screw Protector, Fluoropolymer (Ryton pumps only)	4	36	58-0729 H	SCREW, for Mounting Hydraulic Motor to Pedestal, 5/16"-18 x 1.0" long, Plated Steel	4
11, 13 & 14	58-0714 11	SEAL, Shaft, Buna-N / 316 SS / Carbon / Ceramic	1	38	58-1826 71	PAD, Rubber, Saddle	1
	58-0714 12	SEAL, Shaft, EPDM / 316 SS / Carbon / Ceramic	1	39	58-1828 90	SADDLE, Electric Motor, 6.625" Diameter, Molded Plastic	1
	58-0714 14	SEAL, Shaft, Viton / 316 SS / Carbon / Ceramic	1		58-1825 90	SADDLE, Electric Motor, 5.688" Diameter, Molded Plastic	1
	58-0714 15	SEAL, Shaft, Hastelloy C / Teflon / Silicon Carbide	1	40	58-1846 40	BASEPLATE, Plastic, for Pumps Close Coupled to Electric Motors	1
	58-0714 92SG	SEAL, Shaft, Non Metallic, ECTFE, EPDM, Siliconized Graphite	1	41	58-0934 10	STRAP, for Close Coupled Electric Motor, Stainless Steel	1
	58-0714 94SG	SEAL, Shaft, Non Metallic, ECTFE, Viton, Siliconized Graphite	1	43	58-1015 10	SCREW, Hex Head Cap, 3/8"-16 x 1.25", Stainless Steel	4
	58-46250 11	SEAL, Shaft, 316 SS / Buna-N / Siliconized Graphite	1	44	58-1010 20	ADAPTER, Motor, for Pump Close Coupled to Electric or Pneumatic Motor, Molded Plastic	1
	58-46250 12	SEAL, Shaft, 316 SS / EPDM / Siliconized Graphite	1	45	58-1955 71	SEAL, Lip, Buna-N, .710" ID	2
	58-46250 13	SEAL, Shaft, 316 SS / Viton / Siliconized Graphite	1	46	58-0882 90	SHAFT SLEEVE, Polyethylene	1
15	58-0667 30	IMPELLER, Polyester*, 3 Vane, .535" Wide 4.75" Diameter	1	47	58-0884 71	SLINGER, Buna-N	1
	58-0704 30	IMPELLER, Polyester*, 3 Vane, .535" Wide 5.5" Diameter	1	48	58-1951 90	HOUSING, Bearing, Cast Iron	1
	58-0706 30	IMPELLER, Polyester*, 5 Vane, .535" Wide 5.5" Diameter	1	49	58-1954 90	BEARING, Ball, .787", ID	2
	58-0707 30	IMPELLER, Polyester*, 5 Vane, .535" Wide 5.0" Diameter	1	50	58-1952 10	SHAFT, Stainless Steel, .75" Diameter	1
	58-0708 30	IMPELLER, Polyester*, 3 Vane, .535" Wide 5.0" Diameter	1		58-1952 91	SHAFT, Hastelloy C, .75" Diameter	1
	58-0709 30	IMPELLER, Polyester*, 3 Vane, .535" Wide 5.25" Diameter	1		58-1952 93	SHAFT, Titanium, .75" Diameter	1
	58-0975 30	IMPELLER, Polyester*, 4 Vane, .975" Wide 4.75" Diameter	1	51	58-1953 10	PLATE, End, Stainless Steel	1
16	58-0716 10	SCREW, Impeller, Stainless Steel, 5/16"-24 x .75" long	1	52	58-0730	FLAT WASHER, 5/16", Plated Steel	2
	58-0716 91	SCREW, Impeller, Hastelloy C, 5/16"-24 x .75" long	1	53	58-0729	SCREW, Plated Steel, 5/16"-18 x 1"	2
	58-0716 93	SCREW, Impeller, Titanium, 5/16"-24 x .75" long	1	54	58-0745	KEPNUT, 5/16"-18, Plated Steel	2
17	58-1017 30	VOLUTE, 1-1/2" Female, 2" Male, NPT, Polyester, black	1	55	58-0759 20	BEARING PEDESTAL, Molded Plastic	1
	58-1018 31	VOLUTE, Buna-N Lined, 1-1/2" Female, 2" Male, NPT, Polyester, black	1	56	58-0777	BEARING/SHAFT ASSEMBLY, Standard, Carbon Steel	1
	58-1018 32	VOLUTE, EPDM Lined, 1-1/2" Female, 2" Male, NPT, Polyester, black	1		58-0777 10	BEARING/SHAFT ASSEMBLY, with Stainless Steel Shaft Sleeve	1
	58-1017 20	VOLUTE, 1-1/2" Female, 2" Male, NPT, Noryl, gray	1		58-0777 93	BEARING/SHAFT ASSY, with Titanium Shaft Sleeve	1
	58-1018 21	VOLUTE, Buna-N Lined, 1-1/2" Female, 2" Male, NPT, Noryl, gray	1	55&56	58-2053 01	ASSEMBLY, PEDESTAL, 3/4" Carbon Steel Shaft	1
	58-1018 22	VOLUTE, EPDM Lined, 1-1/2" Female, 2" Male, NPT, Noryl, gray	1		58-2053 02	ASSY, PEDESTAL, with Stainless Steel Shaft Sleeve	1
	58-1017 40	VOLUTE, 1-1/2" Female, 2" Male, NPT, Polypropylene, gray	1		58-2053 03	ASSEMBLY, PEDESTAL, with Titanium Shaft Sleeve	1
	58-1017 60	VOLUTE, 1-1/2" Female, 2" Male, NPT, Ryton, black	1	57	58-1956 10	SHIM, Bearing Shaft, Cast Metal Pedestal, .006" thick	as required
	58-1019 20	VOLUTE, 3" Male, NPT, Noryl, gray	1	58	58-2525 10	SCREW, Hex, 1/4"-20 x 3/4", Stainless Steel	4
	58-1019 30	VOLUTE, 3" Male, NPT, Polyester, black	1	59	58-1950 01	BEARING & PEDESTAL ASSEMBLY with 3/4" Stainless Steel Shaft, (includes items 45, 48, 49, 50, 51, 57 & 58)	1
	58-1019 40	VOLUTE, 3" Male, NPT, Polypropylene, gray	1		58-1950 01H	SAME, with Hastelloy C shaft	1
	58-1019 60	VOLUTE, 3" Male, NPT, Ryton, black	1		58-1950 01T	SAME, with Titanium shaft	1
	58-1020 31	VOLUTE, Buna-N Lined, 3" Male, NPT, Polyester, black	1	60	58-0686	MOTOR, Hydraulic	1
	58-1020 32	VOLUTE, EPDM Lined, 3" Male, NPT, Polyester, black	1	61	58-0634	ENGINE, B & S, 3.5HP, recoil start	1
	58-1020 21	VOLUTE, Buna-N Lined, 3" Male, NPT, Noryl, gray	1		58-0633 AP	ENGINE, B & S, 3.5HP, Industrial Plus, recoil start	1
	58-1217 20	VOLUTE, 1-1/2" Female, 2" Male, BSP, Noryl Gray	1		58-0644 A	ENGINE, B & S, 5.5HP Intek OHV I/C, recoil start	1
	58-1217 30	VOLUTE, 1-1/2" Female, 2" Male, BSP, Polyester, Black	1		58-0635 H	ENGINE, Honda, 5.5HP OHV, recoil start	1
	58-1217 40	VOLUTE, 1-1/2" Female, 2" Male, BSP, Polypropylene, Gray	1		58-0644	ENGINE, B & S, 5.5HP Intek OHV, recoil start	1
	58-1217 60	VOLUTE, 1-1/2" Female, 2" Male, BSP, Ryton, Black	1	62	58-0926	MOTOR, Pneumatic	1
21	58-0720 10	SCREW, Volute, Stainless Steel, 1/4"-20 x 2.375" long, for 1-1/2" / 2" pump	6	63	58-0028	BASEPLATE KIT, Std. Duty, call factory for details for flex coupling to electric motors	1
					58-0016	BASEPLATE KIT, Heavy Duty, call factory for details for flex coupling to electric motors	1
				64	58-0933 72	GASKET, 3.5HP, Engine Protection, EPDM	1
					58-0881 72	GASKET, 5HP, Engine Protection, EPDM	1
				65	58-0929	BASEPLATE, for Pumps Close Coupled to Pneumatic Motor, Painted Steel	1

\*NOTE: If Noryl impellers are required, change the second last digit in the part number from 3 to 2  
 If Ryton impellers are required, change the second last digit in the part number from 3 to 6  
 If Polypropylene impellers are required, change the second last digit in the part number from 3 to 4

NOTE: All specifications, as shown, are subject to change without previous notice.

F.O.B. Lancaster, PA

Minimum Order: \$25.00

Terms: Net 30 Days

## PACER® PUMPS

servicing  
industry  
worldwide

Div. of ASM Industries, Inc.  
 41 Industrial Circle  
 Lancaster, PA 17601-5927 U.S.A.  
 Email: sales@pacerpumps.com

717/656-2161  
 800-233-3861  
 FAX: 717/656/0477

DISTRIBUTED BY

(Printed in U.S.A.)